





COMPANY

OVERVIEW	1
STOCK BLANK APPAREL	3
CUSTOM MANUFACTURING	5

COLLECTIONS


INDEPENDENT	7
AFX	23
EXPEDITION	35
STANDARD SUPPLY	61
PREMIUM	83
JERSEY	113
YOUTH	117

INFORMATION

STYLE INDEX	129
SWATCHES / PANTONES	131
LOCATIONS / CONTACT	135
DISTRIBUTORS	136



 @independenttradingcompany

 /IndependentTradingCompany

 @indytradingco

 Independent Trading Company



Quality Sweatshirts...It's Our Mission.

Leading manufacturer and supplier of high quality blank & custom apparel since 1987.

Building on our roots in the action sports industry since 1987, Independent Trading Company is established as a leading manufacturer and supplier of high quality Custom & Blank apparel for Screen Printers and Brands all over the world. Our collection of blanks, ranging from Sweatshirts to Performance Fleece, Jackets, and Fleece Bottoms is readily available in over 60 styles with a wide range of colors. All styles are produced in high quality fabrics for supreme results when printing or embellishing. We

provide extensive at-once inventory in two locations, California & Pennsylvania, as well as distributors throughout the USA. In addition to domestic distributors, we also have distributors in Canada, Australia, Chile, Germany, Japan, The UK, Brazil, and Mexico. It's our mission to supply the best quality products for our customers and develop long lasting relationships. Many of our best customers are our first customers.



“ We make quality apparel that brands feel confident putting their label on. ”

WHY CHOOSE INDEPENDENT?

It's simple...We make quality apparel that brands feel confident putting their label on.

- Quality Products
- Large Inventory
- No Minimum Order Requirements
- Custom Apparel Manufacturing
- Ready To Ship Within 24hrs
- Warehouses on West & East Coast

At Independent Trading Company we strive to maintain a higher level of quality in all our products by paying special attention to details at every stage of production. We monitor materials and garment assembly processes all the way through to the finished product.

"Quality is in the details."

The finishing touches we put into each design is what makes the difference! We don't need to make 100% cotton draw cords, double fleece lined hoods, or durable zippers, but we do and the result is a wide range of styles that are unique and dependable!



STOCK BLANK APPAREL

A trusted supplier of quality blank apparel to thousands of top clothing brands.

Independent Trading Company keeps large reserves of blank sweatshirts, jackets, fleece bottoms, and more in stock so you can order what you need when you need it. Our customers' orders ship as soon as possible so they can be printed or embellished in a matter of days and placed at retail quickly. We are a trusted supplier to thousands of top clothing brands in the action sports and lifestyle apparel industry.

NO MINIMUMS ON STOCK ORDERS

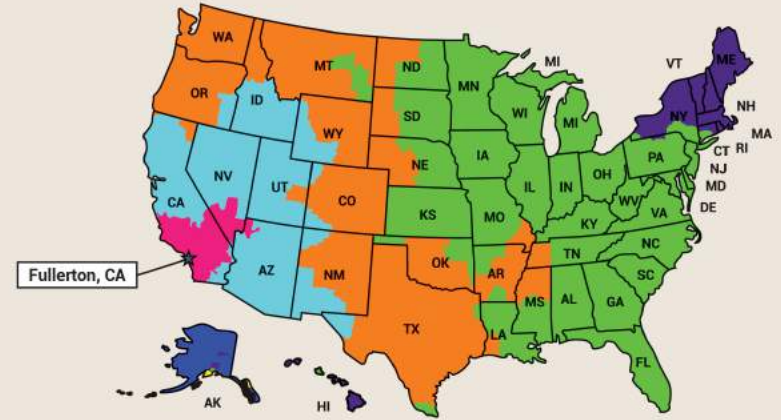
Create your wholesale account and order online.
b2b.independenttradingco.com



STOCK BLANK COLLECTION CATEGORIES



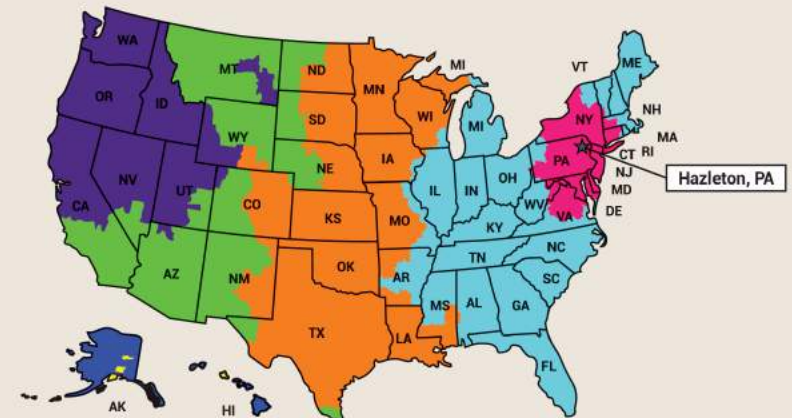
INDEPENDENT TRADING WEST COAST TRANSIT TIMES



	1 Day	2 Days	3 Days	4 Days	5 Days	6 Days	7+ Days
If picked up on...	Will be delivered by...						
Monday	Tue	Wed	Thu	Fri	Mon	Tue	Wed
Tuesday	Wed	Thu	Fri	Mon	Tue	Wed	Thu
Wednesday	Thu	Fri	Mon	Tue	Wed	Thu	Fri
Thursday	Fri	Mon	Tue	Wed	Thu	Fri	Mon
Friday	Mon	Tue	Wed	Thu	Fri	Mon	Tue
Saturday	Tue	Wed	Thu	Fri	Mon	Tue	Wed
Sunday	Tue	Wed	Thu	Fri	Mon	Tue	Wed

The Service Maps and charts are a general representations of transit. For more accurate transit quotes visit Shipping Rates and Delivery Times on fedex.com

INDEPENDENT TRADING EAST COAST TRANSIT TIMES





CUSTOM MANUFACTURING

Can't find it in our stock line? Let's make it custom.

We have the infrastructure and expertise to manufacture anything you design. We guarantee high quality and consistent manufacturing, on time delivery, and prices that can't be beat.

Independent Trading Company has manufactured custom apparel in China for more than 35 years. We have headquarters in San Clemente, California and Ningbo, China. Our Production Managers in California & China are experienced and can assist with every step of the production process, from product development to delivery. We guarantee high quality and consistent manufacturing, on time delivery, great customer service, and competitive prices. From sweatshirts & tees, to woven jackets & flannels, we have the infrastructure and expertise to manufacture anything you design.

- Design & Development
- Pattern Making
- Knitting
- Dyeing

- Cutting
- Embellishing
- Sewing
- Quality Control

- Packaging
- Import & Shipping
- Receiving
- Delivery



MINIMUM ORDER QUANTITY (MOQ) 600pcs Per Color & 1,200pcs Per Style

LEAD TIMES Typical lead times are 90-100 days to exit China after pre-production approval.

Contact us to request a meeting

info@independenttradingco.com • Toll Free: 877.366.9911 • Local: 949.366.9911



INDEPENDENT
COLLECTION

Benchmark in style, quality & fit.



IND5000P

Men's Premium 450gm Heavyweight Cross-Grain Hoodie

XS-3XL | Standard Fit | Heavyweight | 450 gm (13.5 oz)



13.5oz (450gm) 3-end fleece • ring spun cotton • 100% cotton face yarns on solid colors • 20 singles face yarn • double fleece lined hood • antique silver eyelets • heavy duty 100% cotton shoestring drawcord w/ antique silver tips • double ribbing side panels • reverse coverstitch sewing on all seams • body and hood panels sewn Cross-Grain • 520gm 100% cotton 1x1 ribbing at cuff and waistband • tear away woven neck label



Black

Charcoal Heather

Grey Heather

White

Classic Navy

Maroon

Alpine Green



Olive

Dusty Pink

Bone

Red

Royal

Gold

Legend

450gm HEAVYWEIGHT



Body & Hood Panels Sewn Cross-Grain

Double Fleece Lined Hood

Antique Silver Eyelets

450gm/13.5oz. Fleece

Heavy Duty Shoelace Drawcords

Antique Silver Drawcord Tips

Cross-Grain Body Panels

Double Layer 1x1 520gm
100% Cotton Ribbing Side Panels

Reverse Coverstitch On All Seams

1x1 520gm 100% Cotton Ribbing



IND5000C

Men's Premium 450gm Heavyweight Cross-Grain Crew

XS-3XL | Standard Fit | Heavyweight | 450 gm (13.5 oz)



13.5oz (450gm) 3-end fleece • ring spun cotton • 100% cotton
face yarns on solid colors • 20 singles face yarn • double
ribbing side panels • reverse coverstitch sewing on all seams
• body panels sewn Cross-Grain • 520gm 100% cotton 1x1
ribbing at cuff and waistband • tear away woven neck label



Black

Charcoal Heather

Grey Heather

White

Classic Navy

Maroon

Alpine Green



Olive

Dusty Pink

Bone

Red

Royal

Gold



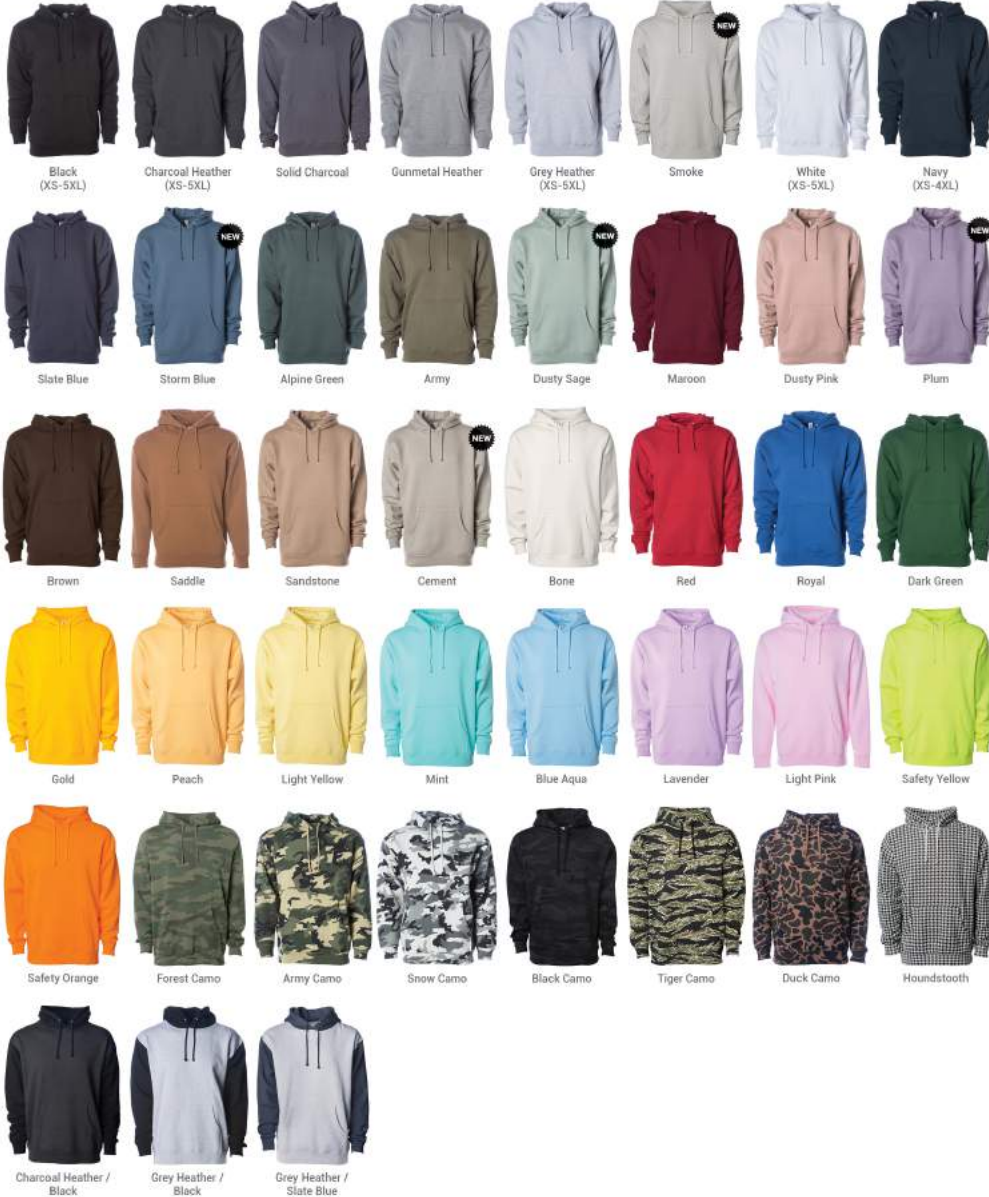
Body & Hood Panels Sewn Cross-Grain

IND4000 Men's Heavyweight Hooded Pullover

XS-3XL (4XL & 5XL available in select colors) | Generous Fit | Heavyweight | 330 gm (10 oz)



10oz. (330gm) cotton/polyester blend fleece • Solid Colors: 70% Cotton/30% Polyester with 100% cotton 32 singles face yarn for supreme printability and softness • Heather Colors: 52% cotton/48% polyester • Camo Colors: 75% cotton/25% polyester with 100% cotton 32 singles face yarn • Safety Colors: 52% cotton/48% polyester • fleece lined hood • split stitch double needle sewing on all seams • twill neck tape • 1x1 ribbing at cuffs and waistband • nickel eyelets • generous fit



IND4000Z

Men's Heavyweight Zip Hood

XS-3XL (4XL & 5XL available in select colors) | Generous Fit | Heavyweight | 330 gm (10 oz)



10oz (330gm) cotton/polyester blend fleece • Solid Colors: 70% cotton/30% polyester with 100% Cotton 32 singles face yarn for supreme printability and softness • Heather Colors: 52% cotton/48% polyester • Camo Colors: 75% cotton/25% polyester with 100% cotton 32 singles face yarn • fleece lined hood • split stitch double needle sewing on all seams • twill neck tape • 1x1 ribbing at cuffs and waistband • nickel eyelets • #5 nickel kissing zipper • generous fit



Black (XS-6XL) Charcoal Heather Solid Charcoal Gunmetal Heather Grey Heather (XS-6XL) Navy (XS-6XL)



Maroon (XS-2XL) Army Sandstone Red Royal Forest Camo



IND20PNT | Men's Midweight Fleece Pant
XS-2XL | Relaxed Fit | Midweight | 280 gm (8.5 oz)



8.5oz. (280gm) cotton/polyester blend fleece • ring spun cotton • elastic waistband with shoestring drawcord • 1x1 ribbing at ankle cuffs • sewn eyelets • sewn fly detail • back pocket • jersey lined hand pockets • relaxed fit.



Men's Midweight Fleece Short | IND20SRT
XS-2XL | Relaxed Fit | Midweight | 280 gm (8.5 oz)

8.5oz. (280gm) cotton/polyester blend fleece • ring spun cotton • elastic waistband with shoestring drawcord • sewn eyelets • sewn fly detail • back pocket • jersey lined hand pockets • relaxed fit • tapered knee opening



IND40RP Men's Lightweight Raglan Hooded Pullover

XS-3XL | Slim Fit | Lightweight | 230 gm (7 oz)



7oz (230gm) cotton/polyester blend fleece • raglan sleeves • jersey lined hood • split stitch double needle sewing • twill neck tape • 1x1 ribbing at cuffs and waistband • nickel eyelets • slim fit

Screen Printers Please Note: This fabric is not made of 100% cotton face yarn.



Gunmetal Heather/Black

Gunmetal Heather/Charcoal Heather

Gunmetal Heather/Classic Navy Heather

Gunmetal Heather/Burgundy Heather

Gunmetal Heather/Army Heather



Charcoal Heather/Black

Charcoal Heather/Burgundy Heather

Charcoal Heather/Army Heather



Unisex Heavyweight Varsity Zip Hood IND45UVZ

XS-3XL | Slim Unisex Fit | Heavyweight | 330 gm (10 oz)

10oz (330gm) cotton/polyester blend fleece • 30 singles cotton/polyester blend face yarn • fleece lined hood • split stitch double needle sewing on all seams • twill neck tape • 1x1 jacquard ribbing at cuffs & waistband • gunmetal eyelets • #5 nylon kissing zipper • slim unisex fit



Charcoal Heather/Black

Gunmetal Heather/Charcoal Heather

Black/Gunmetal Heather

Classic Navy/Gunmetal Heather

Cardinal/Gunmetal Heather

INDDUFBAG

Day Tripper 29L Duffel Bag
20.5" x 10.5" | 29 Liters | 360 gm (10.5 oz)



10.5oz (360 gm) 100% polyester • waterproof interior PVC coating • carrying handles • removable shoulder strap



Black

Black / Checker Straps

Polka Dot

Cheetah

Black Cheetah



Southwest

Tiger Camo

Forest Camo

Black Camo

White Camo





COLLECTION

Lightweight, ultra-soft & slim fit.



AFX90UN Unisex Lightweight Fitted Hooded Pullover

XS-3XL | Slim Unisex Fit | Lightweight | 210 gm (6.5 oz)



6.5oz. (210gm) pre-laundered cotton/polyester blend fleece • 100% cotton 40 singles face yarn for supreme printability and softness • unlined hood • split stitch double needle sewing on all seams • twill neck tape • 1x1 ribbing at cuffs, waistband & pocket openings • nickel eyelets • plastic tipped white round drawcord • slim unisex fit



Classic Styling & Premium Fabric
The best printing fabric in our line.
A screen printers best friend.





Classic Styling & Premium Fabric

The best printing fabric in our line.
A screen printers best friend!



Unisex Lightweight Fitted Zip Hood
XS-3XL | Slim Unisex Fit | Lightweight | 210 gm (6.5 oz)

AFX90UNZ

6.5oz. (210gm) pre-laundered cotton/polyester blend fleece • 100% cotton 40 singles face yarn for supreme printability and softness • unlined hood • split stitch double needle sewing on all seams • twill neck tape • 1x1 ribbing at cuffs, waistband & pocket openings • nickel eyelets • #5 white coil kissing zipper with nickel pull • plastic-tipped white round drawcord • slim unisex fit



AFX64CRP | Women's Lightweight Crop Hooded Pullover

XS-2XL | Standard Fit | Lightweight | 210 gm (6.5 oz)



6.5oz. (210gm) pre-laundered, cotton/polyester blend fleece • 100% cotton 40 singles face yarn for supreme printability and softness • split stitch double needle sewing on all seams • 3/8" flat drawcord • twill neck tape • 1x1 ribbing at cuffs • sewn eyelets • tear away neck label



**CROP
HOODIE**

Bold, Fashion-Forward
garment that's fun & stylish.



**CROP
CREW**

Bold, Fashion-Forward
garment that's fun & stylish.



Women's Lightweight Crop Crew Neck
XS-2XL | Standard Fit | Lightweight | 210 gm (6.5 oz)

AFX24CRPC

6.5oz. (210gm) pre-laundered, cotton/polyester blend fleece
• 100% cotton 40 singles face yarn for supreme printability and softness • split stitch double needle sewing on all seams • twill neck tape • 1x) ribbing at cuffs • tear away neck label



Black



Grey Heather



White



Bone



Blush



Sage



Black Camo



Tie Dye
Cotton Candy



AFX4000 | Men's Lightweight Fitted Hooded Pullover
XS-3XL | Slim Fit | Lightweight | 210 gm (6.5 oz)



6.5oz. (210gm) pre-laundered, cotton/polyester blend fleece • 100% cotton 40 singles face yarn for supreme printability and softness • jersey lined hood • split stitch double needle sewing on all seams • twill neck tape • 1x1 ribbing at cuffs, waistband & pocket openings • nickel eyelets • slim fit



Black Charcoal Heather Gunmetal Heather Grey Heather



Navy Army Red Heather



The Best Printing Fabric In Our Line
A screen printers best friend.



The Best Printing Fabric In Our Line
A screen printers best friend.



Men's Lightweight Fitted Zip Hood | **AFX4000Z**
XS-3XL | Slim Fit | Lightweight | 210 gm (6.5 oz)

6.5oz. (210gm) pre-laundered, cotton/polyester blend fleece • 100% cotton 40 singles face yarn for supreme printability and softness • jersey lined hood • split stitch double needle sewing on all seams • twill neck tape • 1x1 ribbing at cuffs, waistband & pocket openings • nickel eyelets • #5 nickel kissing zipper • slim fit



Black Charcoal Heather Gunmetal Heather Navy

Expedition
COLLECTION

Warm, functional, durable & quality.





Men's Lightweight Pullover Windbreaker Anorak Jacket

XS-3XL (XXS available in select colors) | Standard Fit | Lightweight | 82 gm

EXP54LWP

82gm 100% polyester lightweight water resistant fabric • matte finish eyelets and zippers • #4 zipper with zipper pull & rubber zipper pull tab • reversed zipper tape • fine mesh hood liner • three panel hood • blizzard neck • self neck tape • pouch pocket • bungee toggle at waistband • elastic cuffs • locker loop in center back neck

Screen Printers Please Note:
This garment is 100% Polyester. Poly inks are recommended. Please do your own testing.



Black



Army / Black Zip



Smoke / Black Zip



Aqua
(XXS-3XL)



Blush
(XXS-3XL)



Smoke / Graphite



Classic Navy / Red



Black Camo



EXP54LWZ

Men's Lightweight Windbreaker Jacket

XS-3XL (XXS available in select colors) | Standard Fit | Lightweight | 82 gm



82 gm 100% polyester lightweight water resistant fabric • matte finish eyelets and zippers • #4 zipper with zipper pull & rubber zipper pull tab • reversed zipper tape • fine mesh hood liner • three panel hood • blizzard neck • self neck tape • welt pockets with mesh pocket bags • bungee toggle at waistband • elastic cuffs • locker loop in center back neck

Screen Printer's Please Note:
This garment is 100% Polyester. Poly inks are recommended. Please do your own testing.



Black Classic Navy Graphite Maroon Red Safety Orange Safety Yellow



Khaki / White Blush / White Zip (XXS-3XL) Aqua / White Zip (XXS-3XL) Black / Graphite Classic Navy / Saddle Classic Navy / Army Classic Navy / Royal



Maroon / Classic Navy Black / Forest Camo Forest Camo Black Camo White Camo



EXP64CRP | Women's Lightweight Crop Windbreaker

XS-2XL | Standard Fit | Lightweight | 82 gm



82gm 100% polyester lightweight water resistant fabric • matte finish eyelets and zippers • zipper pull & zipper pull string • reversed zipper tape • fine mesh hood liner • three panel hood • blizzard neck • self neck tape • bungee toggle at waistband • elastic cuffs • locker loop in center back neck

Screen Printers Please Note:
This garment is 100% Polyester. Poly inks are recommended. Please do your own testing.



Black



Blush / White Zip



White Camo



Black Camo



CROP
WINDBREAKER

Bold, Fashion-Forward
garment that's fun & stylish.



Wear it in, pack it out.
Packable Pocket



Men's Lightweight Bomber Jacket

XS-3XL | Standard Fit | Lightweight | 82 gm

EXP52BMR

82gm 100% polyester lightweight water resistant fabric • 100% polyester 1x1 ribbing • waterproof pressure resistance: 600 mm • #5 vislon zipper • self neck tape • welt pockets • locker loop in center back

Screen Printers Please Note:
This garment is 100% Polyester. Poly inks are recommended. Please do your own testing.



Black



Army



Black / White Stripe



EXP50F | Men's Flannel Shirt

XS-3XL | Standard Fit | 200 gm



200gm cotton/polyester blend flannel • button closure • double front pockets with top flap opening • rollup sleeve vents • tear away neck label



Charcoal Heather / Black



Grey Heather / Black



Red / Black



Olive / Black



Many Ways to Customize

Easily customize our stock flannel with embroidery, sewn patch, screen print, woven labels & more.





Concealed Embroidery Access



Our Workwear Jacket & Vest

have a full width hidden zipper for screenprint & embroidery access to easily print multi-color logos & hide embroidery backing on the inside of the garment.

EXP550Z Men's Insulated Canvas Workwear Jacket

XS-3XL | Generous Fit | 100% Cotton Canvas | 360 gm



360gm 100% cotton canvas shell • 60gm hyper-loft poly fill insulation • 100% polyester lining • heavy duty antique brass zipper front closure • antique brass eyelets • 3 panel hood • articulated elbows • 100% cotton drawcord • interior back neck locker patch • 2x2 ribbing at cuffs & waistband • triple needle stitching • #3 hidden dress zipper for concealed embroidery access • tear away neck label

HYPER-LOFT
INSULATION



Black



Saddle



Men's Insulated Canvas Workwear Vest EXP560V

XS-3XL | Standard Fit | 100% Cotton Canvas | 360 gm

360gm 100% cotton canvas shell • 60gm hyper-loft poly fill insulation • 100% polyester lining • heavy duty antique brass 6 snap front closure • hyper-loft insulation • interior back neck locker patch • 2x2 ribbing at collar • #3 hidden dress zipper for concealed embroidery access • tear away neck label

HYPER-LOFT
INSULATION



Black



Saddle

EXP100PFZ

Men's Hyper-Loft Puffy Jacket

XS-3XL | Standard Fit | 100% Nylon Shell

100% nylon exterior shell • 60gm hyper-loft poly fill insulation • 100% polyester lining • #5 reverse coil zippers at chest and pockets • packable pocket with #3 reverse coil zipper • capped elastic sleeve cuff • locker loop • plastic cinche toggle • tear away neck label • concealed chest pocket for embroidery access



HYPER-LOFT
INSULATION



Black



PACKABLE CHEST POCKET



Wear it in.
Pack it out.
Packable Pocket



EXP120PFV

Men's Hyper-Loft Puffy Vest

XS-3XL | Standard Fit | 100% Nylon Shell

100% nylon exterior shell • 60gm hyper-loft poly fill insulation • 100% polyester lining • #5 reverse coil zippers at chest and pockets • packable pocket with #3 reverse coil zipper • capped elastic arm opening • locker loop • plastic cinche toggle • tear away neck label • concealed chest pocket for embroidery access



HYPER-LOFT
INSULATION



Black



PACKABLE CHEST POCKET



Wear it in.
Pack it out.
Packable Pocket



EXP200PFZ

Women's Hyper-Loft Puffy Jacket

XS-2XL | Standard Fit | 100% Nylon Shell

100% nylon exterior shell • 60gm hyper-loft poly fill insulation • 100% polyester lining • #5 reverse coil zippers at chest and pockets • packable pocket with #3 reverse coil zipper • capped elastic sleeve cuff • locker loop • plastic cinche toggle • tear away neck label • concealed chest pocket for embroidery access

HYPER-LOFT
INSULATION



Black



PACKABLE CHEST POCKET



Wear it in.
Pack it out.
Packable Pocket

EXP220PFV

Women's Hyper-Loft Puffy Vest

XS-2XL | Standard Fit | 100% Nylon Shell

100% nylon exterior shell • 60gm hyper-loft poly fill insulation • 100% polyester lining • #5 reverse coil zippers at chest and pockets • packable pocket with #3 reverse coil zipper • capped elastic arm opening • locker loop • plastic cinche toggle • tear away neck label • concealed chest pocket for embroidery access

HYPER-LOFT
INSULATION



Black



PACKABLE CHEST POCKET



Wear it in.
Pack it out.
Packable Pocket



EXP95NB | Men's Heavyweight Windbreaker Hooded Jacket

XS-3XL | Standard Fit | 100% Nylon | Heavyweight | 150 gm 320D



100% nylon 150gm 320 denier • waterproof coating: 10,000 MM • inner pu coating breathability: 5,000 G/M² • unlined hood • self neck tape • antique brass eyelets (Black/Black Colorway = Matte Black Metal Eyelets) • antique brass 6 snap front closure (Black/Black Colorway = Matte Black Metal Snaps) • elastic cuffs • underarm grommets • drawcord closure at hood and bottom opening • standard fit



Black/Black

Black

Classic Navy

Classic Khaki

Forest Camo

Men's Heavyweight Windbreaker Coaches Jacket

XS-3XL | Standard Fit | 100% Nylon | Heavyweight | 150 gm 320D



100% nylon 150gm 320 denier • waterproof coating: 10,000 MM • inner pu coating breathability: 5,000 G/M² • self neck tape • antique brass eyelets (Black/Black Colorway = Matte Black Metal Eyelets) • antique brass 6 snap front closure (Black/Black Colorway = Matte Black Metal Snaps) • elastic cuffs • underarm grommets • drawcord closure at bottom opening • standard fit

EXP99CNB



Black/Black

Black

Classic Navy

Classic Khaki

Forest Camo

EXP94NAW

Men's Heavyweight Water-Resistant Windbreaker Anorak Jacket

XS-3XL | Standard Fit | 100% Nylon | Heavyweight | 150 gm 320D



100% nylon 150gm 320 denier • waterproof coating: 10,000 MM • inner pu coating breathability: 5,000 G/M² • dtm neck taping • #5 dtm body coil zipper • matte metal zipper pull • rubber zipper pull tab • zipper garage • fine mesh hood liner • matte nickel metal eyelets 3 panel hood • scuba neck • round poly drawstring • hidden snaps inside front pocket flap • side slit pockets • tightening toggle at waistband • elastic cuffs



Black

Graphite

Classic Navy

Forest Camo

Black Camo





Comfort & Warmth
 Concealed embroidery access
 for embellishing.



EXP35SSZ

Men's Poly-Tech Soft Shell Jacket

XS-3XL | Generous Fit | Heavyweight | 460 gm (13.8 oz)



13.8oz/460gm total weight • 300 gm 100% water proof polyester shell bonded to graphite colored 160gm micro fleece lining • waterproof coating, 20,000 MM • #5 black reverse coil water resistant zippers • gunmetal zipper pull with black zipper pull tab • 3 panel hood • scuba neck • left chest pocket and welt pockets • zipper garage • toggles at hood and bottom side seams • antique nickel eyelets • media pocket with eyelet

Screen Printers Please Note: Low cure poly ink & poly blocker recommended. Keep garment temperature under 300°.



Black



Classic Navy



Graphite



Men's Heavyweight Poly-Tech Zip Hood

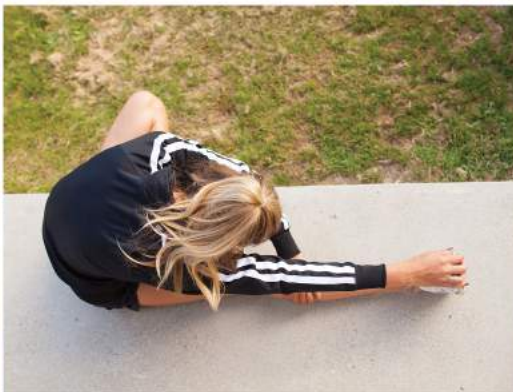
XS-2XL | Standard Fit | Heavyweight | 330gm (10 oz)

EXP80PTZ

10oz. (330gm) polyester/cotton water-resistant fleece body with 100% polyester pique panels • 100% anti-pill polyester face • removable zip off hood with interior cadet collar • 1x1 ribbing at cuffs and waistband • antique nickel eyelets • #5 dtm coil exposed zipper • antique nickel tipped dtm flat drawcord • thumbholes at cuffs • media pocket & eyelet in front welt pocket • standard fit



Black



Women's Lightweight Poly-Tech Zip
XS-3XL | Slim Fit | Lightweight | 190gm (5.5 oz)

EXP60PAZ

5.5oz (190gm) 100% poly fleece • #5 dtm exposed coil zipper
• antique nickel zipper pull with dtm zipper pull tab • zipper garage
• hidden stash pocket • thumbholes at cuffs • slim fit



Black



Gunmetal Heather



White



Aster Blue



Lapis Green



Coral

EXP70PTZ | Unisex Poly-Tech Zip Track Jacket
XS-2XL | Regular Fit | Lightweight | 220 gm (6.5 oz)



6.5oz (220gm) 100% poly fleece • 2 stripes on raglan sleeves • 1x1 ribbing at cuffs & waistband • #5 contrast coil kissing zipper with nickel pull • twill neck tape • media pocket and eyelet • regular fit

Please Note: Colorway Black/Black has no stripes.



Black/Black



Black



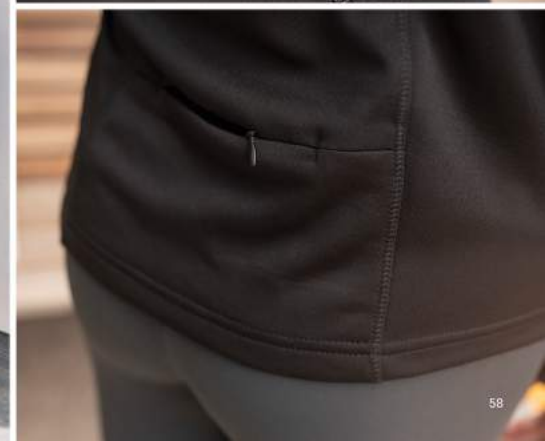
Classic Navy

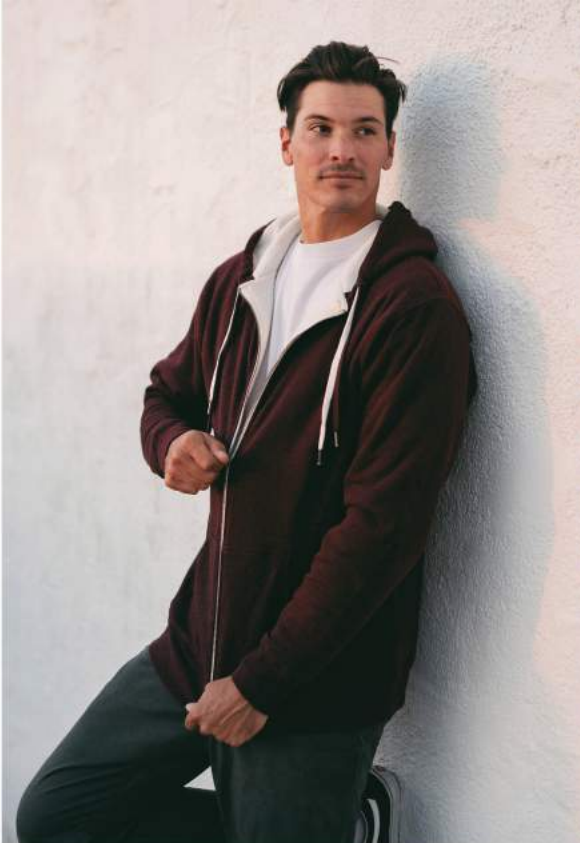


Gunmetal Heather



Brick Red





EXP40SHZ

Men's Heavyweight Sherpa Lined Zip Hood

S-4XL | Generous Fit | Heavyweight | 280gm (8.5 oz)

14 oz. total weight • 8.5oz. (280gm) cotton/polyester blend fleece exterior • 5.5 oz (180 gm) 100% polyester sherpa lined interior • 100% cotton 32 singles face yarn for supreme printability and softness • split stitch double needle sewing on all seams • twill neck tape • 1x1 ribbing at cuffs & waistband • antique nickel eyelets • #5 antique nickel exposed zipper • generous fit



Black / Natural

EXP90SHZ | Unisex Heavyweight Sherpa Lined Zip Hood

XS-2XL | Slim Unisex Fit | Heavyweight | 250 gm (7.5 oz)



12.3oz. total weight • 7.5oz. (250gm) pre-laundered cotton/polyester blend french terry • 4.7 oz (160 gm) 100% polyester sherpa lined interior • 32 singles face yarn for supreme printability and softness • split stitch double needle sewing • 1x1 ribbing at cuffs & waistband • antique nickel eyelets • antique nickel tipped flat drawcord • 2 drawcords (1-DTM & 1-Natural) • #5 antique nickel exposed zipper • media pocket & eyelet in front pocket • thumbholes at cuffs • twill neck tape • unisex fit



Black

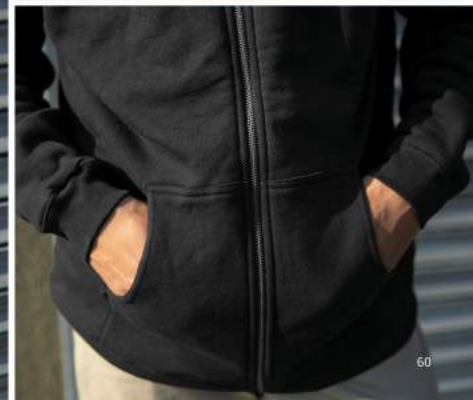
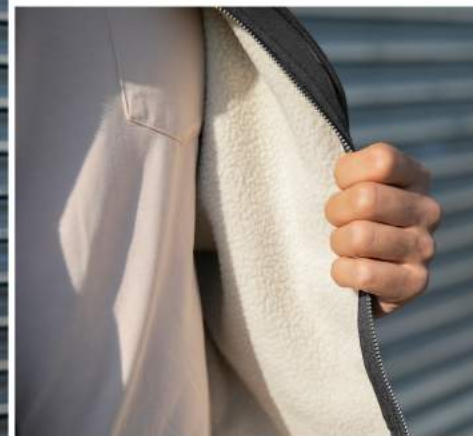
Charcoal Heather

Salt & Pepper

Burgundy Heather

Navy Heather

Sky Heather



**STANDARD
SUPPLY**

COLLECTION

Standard in style, quality & fit.





SS4500 Men's Midweight Hooded Pullover

XS-3XL (4XL & 5XL available in select colors) | Standard Fit | Midweight | 280 gm (8.5 oz)

8.5oz. (280gm) cotton/polyester blend fleece • Solid Colors & Gunmetal Heather. 80% cotton/20% polyester with 100% cotton 20 singles face yarn for supreme printability and softness • Grey Heather: 75% cotton/25% polyester • All other Heather Colors: 55% cotton/45% polyester • jersey lined hood • split stitch double needle sewing on all seams • twill neck tape • 1x1 ribbing at cuffs & waistband • metal eyelets • standard fit



Black (XS-5XL) Charcoal Heather (XS-5XL)



Solid Charcoal Gunmetal Heather Grey Heather (XS-5XL) Smoke White (XS-5XL) Classic Navy Classic Navy Heather



Maroon (XS-5XL) Alpine Green Army (XS-5XL) Army Heather (XS-5XL) Brown Saddle Sandstone (XS-5XL) Bone (XS-5XL)



Royal (XS-5XL) Royal Heather Forest Green Kelly Green Kelly Green Heather (XS-5XL) Red (XS-5XL) Orange Gold (XS-5XL)



Purple Lavender (XS-5XL) Light Pink (XS-5XL) Peach Light Yellow (XS-5XL) Mint (XS-5XL) Blue Aqua (XS-5XL) Safety Yellow (XS-5XL)



Safety Orange (XS-5XL) Neon Pink Forest Camo (XS-5XL) Black Camo (XS-5XL)

SS4500Z Men's Midweight Zip Hood

XS-3XL | Standard Fit | Midweight | 280 gm (8.5 oz)



8.5oz (280gm) cotton/polyester blend fleece • Solid Colors & Gunmetal Heather: 80% cotton/20% polyester with 100% cotton 20 singles face yarn • Grey Heather: 75% cotton/25% polyester • All other Heather Colors: 55% cotton/45% polyester • jersey lined hood • split stitch double needle sewing on all seams • twill neck tape • 1x1 ribbing at cuffs & waistband • metal eyelets • #5 metal kissing zipper • standard fit



Black Charcoal Heather Solid Charcoal Gunmetal Heather Grey Heather White



Navy Classic Navy Heather (XS-2XL) Maroon Alpine Green Army



Army Heather (XS-2XL) Sandstone Royal (XS-2XL) Safety Yellow Forest Camo



SS3000 | Men's Midweight Crew Neck

XS-3XL (4XL & 5XL available in select colors) | Standard Fit | Midweight | 280 gm (8.5 oz)



8.5oz. (280gm) cotton/polyester blend fleece • Solid Colors: 8 Gunmetal Heather, 80% cotton/20% polyester with 100% cotton 20 singles face yarn • Grey Heather: 75% cotton/25% polyester • All other Heather Colors: 55% cotton/45% polyester • split stitch double needle sewing on all seams • twill neck tape • 1x1 ribbing at collar, cuffs and waistband • standard fit



SS1000 Unisex Lightweight Loopback Terry Hooded Pullover

XS-3XL | Slim Unisex Fit | Lightweight | 250 gm (7.5 oz)



7.5oz. (250gm) cotton/polyester blend • loopback terry fabric • 20 singles face yarn • antique silver eyelets • double shoelace drawcords w/ antique silver metal tips • twill neck tape • tear away neck label • 1x1 ribbing at cuffs & waistband • unisex fit



Black Charcoal Heather Athletic Heather White Misty Blue Rose

Indigo Port Olive Harvest Gold Sand Bone



Double Drawcords!
Ditch the one you don't like,
or rock both.





Double Drawcords!
Ditch the one you don't like,
or rock both.



Unisex Lightweight Loopback Terry Zip Hood
XS-3XL | Slim Unisex Fit | Lightweight | 250 gm (7.5 oz)

SS1000Z

7.5oz. (250gm) cotton/polyester blend • loopback terry fabric • 20 singles face yarn • antique silver zipper & zipper pull • antique silver zipper & zipper pull • antique silver eyelets • double shoelace drawcords w/ antique silver metal tips • twill neck tape • tear away neck label • 1x1 ribbing at cuffs & waistband • unisex fit





Loopback Terry

Unique fabric, modern colors, and everyday comfort



SS1000C Unisex Lightweight Loopback Terry Crew Neck

XS-3XL | Slim Unisex Fit | Lightweight | 250 gm (7.5 oz)



7.5oz (250gm) cotton/polyester blend • loopback terry fabric • 20 singles face yarn • twill neck tape • tear away neck label • 1x1 ribbing at cuffs & waistband • unisex fit



Black

Charcoal Heather

Athletic Heather

White

Misty Blue

Rose



Indigo

Port

Olive

Harvest Gold

Sand

Bone

SS008 | Women's Midweight Hooded Pullover

XS-2XL | Standard Fit | Midweight | 280 gm (8.5 oz)



8.5oz. (280gm) cotton/polyester blend fleece • Solid Colors: 80% cotton/20% polyester with 100% cotton 20 singles face yarn for supreme printability and softness • Grey Heather: 75% cotton/25% polyester • Charcoal Heather: 55% Cotton/45% Polyester • jersey lined hood • split stitch double needle sewing on all seams • twill neck tape • 1x1 ribbing at cuffs & waistband • sewn eyelets • tear away neck label • standard fit



Black

Charcoal Heather

Grey Heather

White



Best Value Midweight Hoodie
Great price & great quality

SS650 | Women's Lightweight Hooded Pullover

XS-2XL | Slim Fit | Lightweight | 220 gm (6.5 oz)



6.5oz, (220gm) cotton/polyester blend fleece • cotton/polyester blend 24 singles face yarn • unlined hood • split stitch double needle sewing • twill neck tape • 1x1 ribbing at cuffs & waistband • metal eyelets • slim fit

Screen Printers Please Note:
This fabric is not made of 100% cotton face yarn.



Black Charcoal Heather Gunmetal Heather White Misty Blue Dusty Rose Light Blackberry



SS650Z | Women's Lightweight Zip Hood

XS-2XL | Slim Fit | Lightweight | 220 gm (6.5 oz)



6.5oz. (220gm) cotton/polyester blend fleece • cotton/polyester blend 24 singles face yarn • unlined hood • split stitch double-needle sewing • twill neck tape • 1x1 ribbing at cuffs & waistband • metal eyelets • #5 dtm coil kissing zipper • slim fit

Screen Printers Please Note:

This fabric is not made of 100% cotton face yarn.



Black

Charcoal Heather

Gunmetal Heather

White

Misty Blue

Dusty Rose

Light Blackberry



SS240 | Women's Lightweight Crew
XS-2XL | Slim Fit | Lightweight | 220 gm (6.5 oz)



6.5oz. (220gm) cotton/polyester blend fleece • cotton/polyester blend 24 singles face yarn • split stitch double needle sewing • twill neck tape • 1x1 ribbing at cuffs & waistband • 1x1 rib capped neckline • slim fit

Screen Printers Please Note:
This fabric is not made of 100% cotton face yarn.



Black

Charcoal Heather

Gunmetal Heather

Misty Blue

Dusty Rose

Light Blackberry





Specialty fabrics, unique details & colors.



PRM4500 Unisex Midweight Pigment Dye Hooded Pullover

XS-3XL | Standard Fit | Midweight | 300 gm (9 oz)



9oz. (300gm) cotton/polyester blend fleece • 100% cotton 30 singles face yarn • jersey lined hood • split stitch double needle sewing on all seams • twill neck tape • 1x1 ribbing at cuffs and waistband • sewn eyelets • standard fit



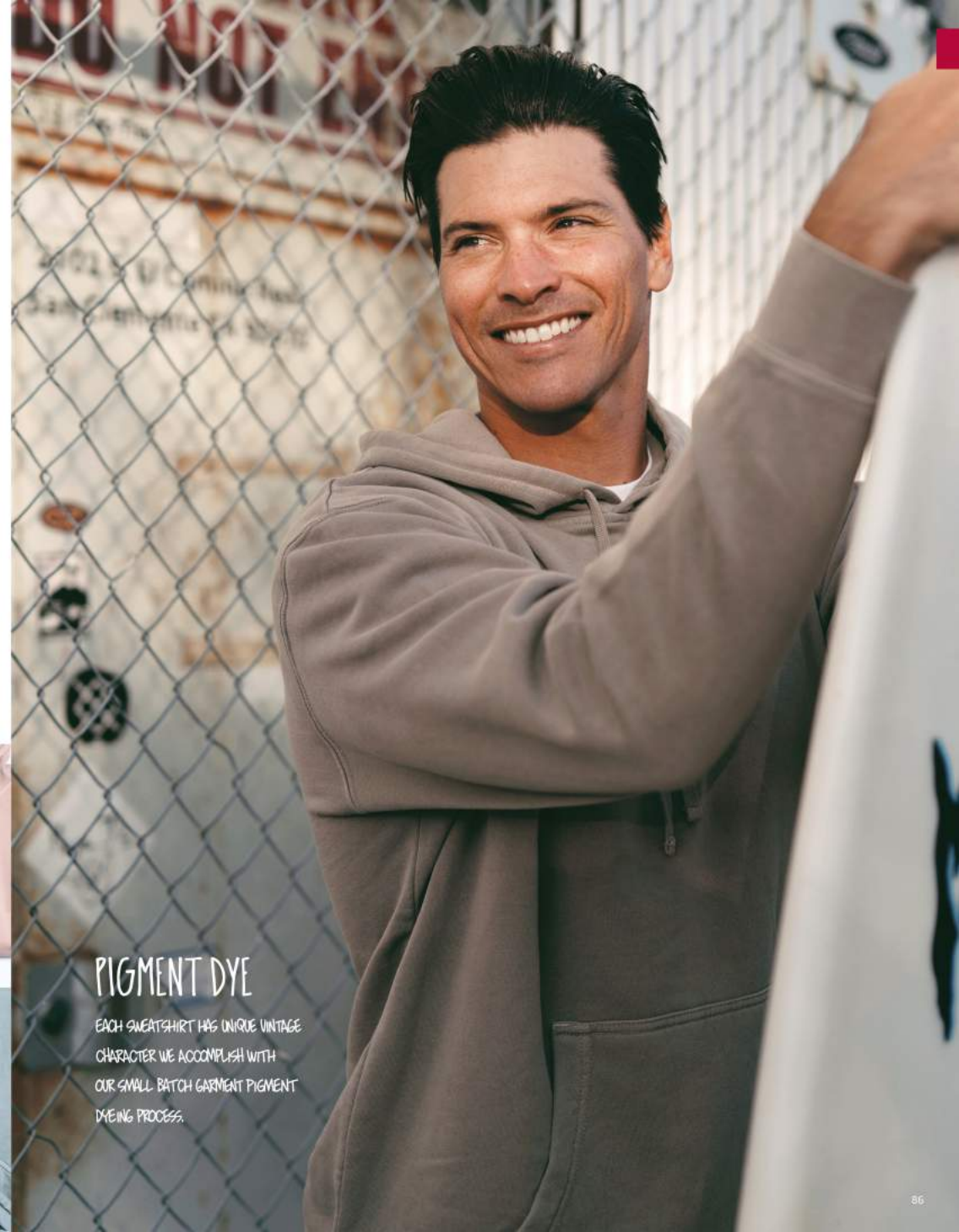
Pigment Black Pigment Maroon Pigment Slate Blue Pigment Alpine Green Pigment Sandstone Pigment Light Blue



Pigment Mint Pigment Pink Pigment Yellow Pigment Amber Pigment Plum Pigment Clay



Pigment Cement Pigment Dusty Pink Pigment Sage Pigment Ivory Prepared For Dye



PIGMENT DYE

EACH SWEATSHIRT HAS UNIQUE VINTAGE CHARACTER WE ACCOMPLISH WITH OUR SMALL BATCH GARMENT PIGMENT DYEING PROCESS.

PRM3500 Unisex Midweight Pigment Dye Crew Neck

XS-3XL | Standard Fit | Midweight | 300 gm (9 oz)



9oz (300gm) cotton/polyester blend fleece • 100% cotton 30 singles face yarn • split stitch double needle sewing on all seams • twill neck tape • 1x1 ribbing at cuffs and waistband • standard fit



PIGMENT DYE

EACH SWEATSHIRT HAS UNIQUE VINTAGE CHARACTER WE ACCOMPLISH WITH OUR SMALL BATCH GARMENT PIGMENT DYEING PROCESS.

PRM50PTPD



Men's Pigment Dye Fleece Pant

XS-2XL | Relaxed Fit | Midweight | 300 gm (9 oz)

9oz (300 gm) cotton/polyester blend • ring spun cotton • 100% cotton 30 singles face yarn • elastic waistband • flat drawcord • 1x1 ribbing at ankle cuffs • sewn eyelets • sewn fly detail • back pocket • Jersey lined hand pockets • relaxed fit



Pigment Black

Pigment Maroon

Pigment Slate Blue



Pigment Alpine Green

Pigment Sandstone

Pigment Light Blue



Pigment Mint

Pigment Pink

Pigment Yellow



Prepared For Dye



PIGMENT DYE



PRM50STPD

Men's Pigment Dye Fleece Short

XS-2XL | Relaxed Fit | Midweight | 300 gm (9 oz)

9oz (300 gm) cotton/polyester blend • ring spun cotton • 100% cotton 30 singles face yarn • elastic waistband • flat drawcord • sewn eyelets • sewn fly detail • back pocket • Jersey lined hand pockets • relaxed fit with tapered knee opening



Pigment Black

Pigment Maroon



Pigment Slate Blue

Pigment Alpine Green



Pigment Sandstone

Pigment Light Blue



Pigment Mint

Pigment Pink



Pigment Yellow

Prepared For Dye



PIGMENT DYE

PRM2500 | Women's California Wave Wash Hooded Pullover
 XS-2XL | Standard Fit | Lightweight | 230 gm (7 oz)



7.0oz. (230gm) 52% cotton/48% polyester blend • 3-end fleece • raglan sleeves
 • blind stitch • coverstitch sewing • sewn eyelets • twill neck tape • standard fit

Screen Printers Please Note:
 This fabric is not made of 100% cotton face yarn.



California Wave Wash
 One of a kind fit, feel,
 and color tone.



California Wave Wash
One of a kind fit, feel,
and color tone.

PRM2500Z | Women's California Wave Wash Zip Hood

XS-2XL | Standard Fit | Lightweight | 230 gm (7 oz)



7.0oz. (230gm) 52% cotton/48% polyester blend • 3-end fleece
• raglan sleeves • blind stitch • coverstitch sewing • sewn
eyelets • twill neck tape • antique nickel zipper • standard fit

Screen Printers Please Note:
This fabric is not made of 100% cotton face yarn.



Black

Shadow

Misty Blue

Sage

Dusty Rose

Blush

Bone



Women's California Wave Wash Crew Neck | PRM2000

XS-2XL | Standard Fit | Lightweight | 230gm (7 oz)

7.0oz. (230gm) 52% cotton/48% polyester blend • 3-end fleece
• raglan sleeves • blind stitch • coverstitch sewing • standard fit

Screen Printers Please Note:
This fabric is not made of 100% cotton face yarn.



Black

Shadow

Misty Blue

Sage

Dusty Rose

Blush

Bone



California Wave Wash
 One of a kind fit, feel,
 and color tone.



PRM20PNT

Women's California Wave Wash Pant

XS-2XL | Standard Fit | Lightweight | 230 gm (7 oz)

7.0oz (230gm) 52% cotton/48% polyester blend • 3-end fleece • blind stitch
 • coverstitch sewing • elastic waistband with shoestring drawcord • 1x1
 ribbing at ankle cuffs • sewn eyelets • jersey lined handpockets • standard fit

Screen Printers Please Note
 This fabric is not made of 100% cotton face yarn.



Black Shadow Misty Blue



Sage Dusty Rose Blush



Bone Forest Camo Heather Black Camo Heather

PRM20SRT

Women's California Wave Wash Short

XS-2XL | Standard Fit | Lightweight | 230 gm (7 oz)

7.0oz. (230gm) 52% cotton / 48% polyester blend • 3-end fleece • blind stitch • coverstitch sewing • elastic waistband with shoestring drawcord • sewn eyelets • jersey lined hand pockets • standard fit

Screen Printers Please Note:
This fabric is not made of 100% cotton face yarn.



Black



Shadow



Misty Blue



Sage



Dusty Rose



Blush



Bone



Forest Camo Heather



Black Camo Heather



California Wave Wash
One of a kind fit, feel,
and color tone.





PRM4500TD | Unisex Midweight Tie Dye Hooded Pullover
XS-3XL | Standard Fit | Midweight | 300 gm (9 oz)



9oz. (300gm) cotton/polyester blend fleece • 100% cotton 30 singles face yarn • jersey lined hood • split stitch double needle sewing on all seams • twill neck tape • 1x1 ribbing at cuffs and waistband • sewn eyelets • standard fit

PRM3500TD | Unisex Midweight Tie Dye Crew Neck
XS-3XL | Standard Fit | Midweight | 300 gm (9 oz)



9oz. (300gm) cotton/polyester blend fleece • 100% cotton 30 singles face yarn • split stitch double needle sewing on all seams • twill neck tape • 1x1 ribbing at cuffs and waistband • standard fit



Tie Dye Black Tie Dye Navy Tie Dye Aqua Blue Tie Dye Pink



Tie Dye Dusty Pink Tie Dye Olive Tie Dye Cotton Candy Tie Dye Sunset Swirl



Tie Dye Black Tie Dye Navy Tie Dye Aqua Blue Tie Dye Pink



Tie Dye Dusty Pink Tie Dye Olive Tie Dye Cotton Candy Tie Dye Sunset Swirl

PRM50PTTD

Men's Tie Dye Fleece Pant

XS-2XL | Relaxed Fit | Midweight | 300 gm (9 oz)

9oz (300 gm) cotton/polyester blend • 100% cotton 30 singles face yarn • elastic waistband with flat drawcord • 1x1 ribbing at ankle cuffs • sewn eyelets • sewn fly detail • back pocket • Jersey lined hand pockets • relaxed fit.



Tie Dye Black



TIE DYE NAVY



Tie Dye Aqua Blue



Tie Dye Pink



Tie Dye Cotton Candy



Tie Dye Sunset Surf



PRM50STTD

Men's Tie Dye Fleece Short

XS-2XL | Relaxed Fit | Midweight | 300 gm (9 oz)

9oz (300 gm) cotton/polyester blend • 100% cotton 30 singles face yarn • elastic waistband with flat drawcord • sewn eyelets • sewn fly detail • back pocket & Jersey lined hand pockets • relaxed fit with tapered knee opening



Tie Dye Black



Tie Dye Navy



PRM4500MW

Unisex Midweight Mineral Wash Hooded Pullover

XS-2XL | Standard Fit | Midweight | 300 gm (9 oz)

9oz (300gm) cotton/polyester blend fleece • 100% cotton 30 singles face yarn • jersey lined hood • split stitch double needle sewing on all seams • twill neck tape • 1x1 ribbing at cuffs and waistband • sewn eyelets • standard fit



Mineral Wash Black



PRM50PTMW

Men's Mineral Wash Fleece Pant

XS-2XL | Relaxed Fit | Midweight | 300 gm (9 oz)

9oz (300 gm) cotton/polyester blend • 100% cotton 30 singles face yarn • elastic waistband with flat drawcord • 1x1 ribbing at ankle cuffs • sewn eyelets • sewn fly detail • back pocket • Jersey lined hand pockets • relaxed fit



Mineral Wash Black



PRM50STMW

Men's Mineral Wash Fleece Short

XS-2XL | Relaxed Fit | Midweight | 300 gm (9 oz)

9oz (300 gm) cotton/polyester blend • 100% cotton 30 singles face yarn • elastic waistband with flat drawcord • sewn eyelets • sewn fly detail • back pocket & Jersey lined hand pockets • relaxed fit with tapered knee opening



Mineral Wash Black



PRM90HT Unisex Midweight French Terry Hooded Pullover
XS-2XL | Slim Unisex Fit | Midweight | 250 gm (7.5 oz)



7.5oz. (250gm) pre-laundered cotton/polyester blend french terry • 32 singles face yarn for supreme printability and softness • unlined hood • split stitch double needle sewing • 1x1 ribbing at cuffs, waistband & side panels • antique nickel eyelets • two antique nickel tipped flat drawcords (one contrast + one dim) • media pocket & eyelet in front pocket • thumbholes at cuffs • twill neck tape • slim unisex fit

Screen Printers Please Note:
This fabric is not made of 100% cotton face yarn.



Unisex Midweight French Terry Zip Hood | **PRM90HTZ**
XS-3XL | Slim Unisex Fit | Midweight | 250 gm (7.5 oz)

7.5oz. (250gm) pre-laundered cotton/polyester blend french terry • 32 singles face yarn for supreme printability and softness • unlined hood • split stitch double needle sewing • 1x1 ribbing at cuffs & waistband • antique nickel eyelets • antique nickel tipped flat drawcord • #5 antique nickel exposed zipper • media pocket & eyelet in front pocket • thumbholes at cuffs • twill neck tape • slim unisex fit

Screen Printers Please Note:
This fabric is not made of 100% cotton face yarn.



Black Charcoal Heather Salt & Pepper Navy Heather Burgundy Heather



Burnt Orange Heather Golden Wheat Heather Sky Heather Oatmeal Heather Oatmeal Heather/Salt & Pepper



Black Charcoal Heather Salt & Pepper Navy Heather Burgundy Heather Olive Heather (XS-2XL)



Burnt Orange Heather (XS-2XL) Golden Wheat Heather (XS-2XL) Sky Heather (XS-2XL) Oatmeal Heather (XS-2XL) Oatmeal Heather/Salt & Pepper (XS-2XL)

PRM33SBP



Unisex Midweight Special Blend Raglan Hooded Pullover

XS-3XL | Slim Unisex Fit | Midweight | 270 gm (8 oz)

8oz (270gm) cotton/polyester blend • 30 singles cotton/polyester blend face yarn • raglan sleeves • unlined hood • reverse coverstitch sewing • twill neck tape • 1x1 ribbing at cuff, and waistband • sewn eyelets • self fabric side panel inserts • slim unisex fit
Screen Printers Please Note: This fabric is not made of 100% cotton face yarn.





PRM33SBZ Unisex Midweight Special Blend Raglan Zip Hood

XS-3XL | Slim Unisex Fit | Midweight | 270 gm (8 oz)



8oz. (270gm) cotton/polyester blend • 30 singles cotton/polyester blend face yarn • raglan sleeves • unlined hood • reverse coverstitch sewing • twill neck tape • 1x1 ribbing at cuff, and waistband • sewn eyelets • self fabric side panel inserts • #5 antique nickel kissing zipper • slim unisex fit

Screen Printers Please Note: This fabric is not made of 100% cotton face yarn.

Unisex Midweight Special Blend Raglan Crew Neck

XS-3XL | Slim Unisex Fit | Midweight | 270 gm (8 oz)

PRM30SBC



8oz. (270gm) cotton/polyester blend • 30 singles cotton/polyester blend face yarn • raglan sleeves • reverse coverstitch sewing • twill neck tape • 1x1 ribbing at neck, cuff, and waistband • self fabric side panel inserts • slim unisex fit

Screen Printers Please Note: This fabric is not made of 100% cotton face yarn.



Black Carbon Heather Nickel Heather Midnight Heather Crimson Heather Moss Heather Classic Navy



Maroon Pacific Heather Pomegranate Heather Sea Green Heather Stone Heather Nickel Heather / Black Nickel Heather / Forest Camo



Black Carbon Heather Nickel Heather Midnight Heather Crimson Heather Moss Heather Classic Navy



Maroon Pacific Heather Pomegranate Heather Sea Green Heather Stone Heather Nickel Heather / Black Nickel Heather / Forest Camo



PRM65DRS | Women's Midweight Special Blend Hooded Pullover Dress

XS-ZXL | Slim Fit | Midweight | 270 gm (8 oz)



Boz (270gm) cotton/polyester blend fleece • unlined hood • split stitch double needle sewing • 1x1 ribbing at cuffs & waistband sewn eyelets • crossover neck • two drawcord colors • dtm twill neck tape • front pouch pocket • thumbholes at cuffs • slim fit

Screen Printers Please Note:
This fabric is not made of 100% cotton face yarn.



Midweight Special Blend 6'6" Stadium Blanket | **INDBKTSB**

62" x 78" | Midweight | 270 gm (8 oz)

Boz (270gm) cotton/polyester special blend fleece • 30 singles cotton/polyester blend face yarn • 1" self hem with double needle top stitch sewing on all four edges.

Screen Printers Please Note:
This fabric is not made of 100% cotton face yarn.



Black

Carbon

Nickel

Maroon



Black

Carbon Heather

Nickel Heather

Midnight Heather

Pacific Heather

Pomegranate Heather

Sea Green Heather

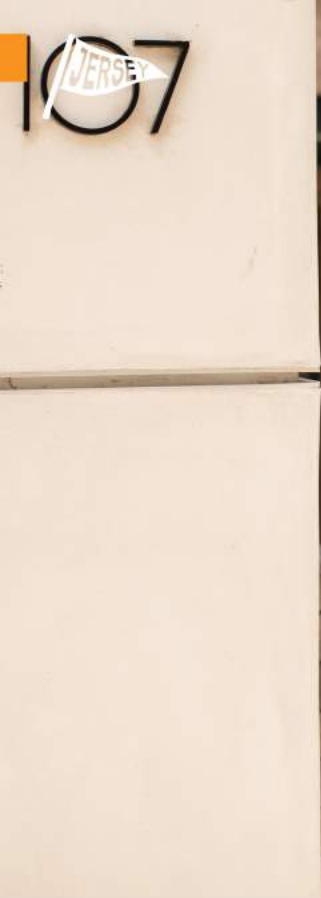
Forest Camo

Red Buffalo Plaid

JERSEY
COLLECTION

Lightweight, ultra-soft & fleece alternative.





SS150J | Men's Lightweight Jersey Hooded Pullover

XS-3XL | Slim Fit | Lightweight | 150 gm (4.5 oz)



4.5oz. (150gm) cotton/polyester blend jersey • brick red & black are 100% cotton • 30 singles yarn • unlined hood • split stitch double needle sewing • twill neck tape • 1x1 ribbing at cuffs & waistband • sewn eyelets • front pouch pocket • slim fit



Black

Charcoal Heather

Gunmetal Heather

Classic Navy Heather

Olive

Men's Lightweight Jersey Zip Hood | **SS150JZ**

XS-3XL | Lightweight | 150 gm (4.5 oz)

4.5oz. (150gm) cotton/polyester blend jersey • brick red & black are 100% cotton • 30 singles yarn • unlined hood • split stitch double needle sewing • twill neck tape • 1x1 ribbing at cuffs & waistband • sewn eyelets • #5 dtm coil kissing zipper • front pouch pocket • slim fit



Black

Charcoal Heather

Gunmetal Heather

Classic Navy Heather

Olive

Youth

COLLECTION

Quality, standard fit & popular colors.





PRM1500Y Youth Midweight Pigment Dye Hooded Pullover

XS-XL | Standard Fit | Midweight | 300 gm (9 oz)



9oz. (300gm) cotton/polyester blend fleece • 100% cotton 30 singles face yarn • jersey lined hood • split stitch double needle sewing on all seams • twill neck tape • 1x1 ribbing at cuffs and waistband • standard fit



Pigment Black Pigment Maroon Pigment Slate Blue Pigment Alpine Green Pigment Sandstone



Pigment Light Blue Pigment Mint Pigment Pink Pigment Yellow

TIE DYE



Youth Midweight Tie Dye Hooded Pullover | **PRM1500TD**

XS-XL | Standard Fit | Midweight | 300 gm (9 oz)

9oz. (300gm) cotton/polyester blend fleece • 100% cotton 30 singles face yarn • jersey lined hood • split stitch double needle sewing on all seams • twill neck tape • 1x1 ribbing at cuffs and waistband • standard fit



Tie Dye Black Tie Dye Navy Tie Dye Aqua Blue Tie Dye Pink



Tie Dye Cotton Candy Tie Dye Sunset Swirl

SS4001Y Youth Midweight Hooded Pullover

S-XL | Standard Fit | Midweight | 280 gm (8.5 oz)



8.5 oz (280 gm) cotton/polyester blend fleece • 100% cotton 20 singles face yarn • split stitch double needle sewing on all seams • jersey lined hood • twill neck tape • 1x1 ribbing at cuffs & waistband • no drawcord • standard fit



Black Charcoal Heather Grey Heather White Classic Navy



Royal Heather Red Maroon Alpine Green Mint



Light Pink Forest Camo Black Camo



SS4001YZ Youth Midweight Zip Hood

S-XL | Standard Fit | Midweight | 280 gm (8.5 oz)



8.5 oz (280 gm) cotton/polyester blend fleece • 100% cotton 20 singles face yarn • jersey lined hood • split stitch double needle sewing on all seams • twill neck tape • no drawcord • 1x1 ribbing at cuffs & waistband • #5 metal kissing zipper • standard fit



Black Charcoal Heather Grey Heather Classic Navy Maroon



Alpine Green Red Royal Heather Mint Light Pink



EXP24YWZ

Youth Lightweight Windbreaker Jacket

XS-XL | Standard Fit | Lightweight | 82 gm

82 gm 100% polyester lightweight water resistant fabric • matte finish eyelets and zippers • #4 zipper with zipper pull & rubber zipper pull tab • reversed zipper tape • fine mesh hood liner • three panel hood • blizzard neck • self neck tape • welt pockets with mesh pocket bags • tightening toggle at waistband • elastic cuffs • locker loop in center back neck



Black Black / Graphite



Maroon / Classic Navy Black / Forest Camo





PRM15YSB Youth Lightweight Special Blend Raglan Hooded Pullover

XS-XL | Standard Fit | Lightweight | 210 gm (6.5 oz)



6.5oz. (210gm) cotton/polyester blend • 32 singles cotton/polyester blend face yarn • raglan sleeves • unlined hood • split stitch double needle sewing • twill neck tape • 1x1 ribbing at cuff and waistband

Screen Printers Please Note:
This fabric is not made of 100% cotton face yarn.



PRM15YSBZ Youth Lightweight Special Blend Raglan Zip Hood

XS-XL | Standard Fit | Lightweight | 210 gm (6.5 oz)

6.5oz. (210gm) cotton/polyester blend • 32 singles cotton/polyester blend face yarn • raglan sleeves • unlined hood • split stitch double needle sewing • twill neck tape • #5 dtm coil kissing zipper with nickel pull • 1x1 ribbing at cuff and waistband

Screen Printers Please Note:
This fabric is not made of 100% cotton face yarn.



Black Nickel Heather Midnight Heather Crimson Heather Moss Heather



Nickel Heather/Carbon Heather Carbon Heather/Black Nickel Heather/Forest Camo Pacific Heather Pomegranate Heather



Black Nickel Heather Midnight Heather



Nickel Heather/Carbon Heather Carbon Heather/Black Pacific Heather Pomegranate Heather



PRM10TSB | Toddler Lightweight Special Blend Raglan Hooded Pullover

2T, 4T, 5/6 | Standard Fit | Lightweight | 210 gm (6.5 oz)



6.5oz. (210gm) cotton/polyester blend • 32 singles cotton/polyester blend face yarn • raglan sleeves • unlined hood • split stitch double needle sewing • twill neck tape • 1x1 ribbing at cuff and waistband

Screen Printers Please Note:
This fabric is not made of 100% cotton face yarn.



Toddler Lightweight Special Blend Raglan Zip Hood | **PRM10TSBZ**

2T, 4T, 5/6 | Standard Fit | Lightweight | 210 gm (6.5 oz)

6.5oz. (210gm) cotton/polyester blend • 32 singles cotton/polyester blend face yarn • raglan sleeves • unlined hood • split stitch double needle sewing • twill neck tape • #5 dtm coil kissing zipper with nickel pull • 1x1 ribbing at cuff and waistband



PRM11PNT & PRM16PNT

Toddler & Youth Lightweight Special Blend Pant
2T, 4T, 5/6, XS-XL | Standard Fit | Lightweight | 210 gm (6.5 oz)

Toddler & Youth Lightweight Special Blend Short
2T, 4T, 5/6, XS-XL | Standard Fit | Lightweight | 210 gm (6.5 oz)

PRM11SRT & PRM16SRT



6.5oz. (210gm) cotton/polyester blend • 32 singles cotton/polyester blend face yarn • elastic waistband • flat drawcord • sewn eyelets • sewn fly detail • back pocket • jersey lined hand pockets • tear away label • relaxed fit

Screen Printers Please Note:
This fabric is not made of 100% cotton face yarn.

6.5oz. (210gm) cotton/polyester blend • 32 singles cotton/polyester blend face yarn • elastic waistband • flat drawcord • sewn eyelets • sewn fly detail • back pocket • jersey lined hand pockets • tear away label • relaxed fit with tapered knee opening

Screen Printers Please Note:
This fabric is not made of 100% cotton face yarn.



Black



Nickel Heather



Forest Camo Heather



Black



Nickel Heather



Forest Camo Heather



STYLE INDEX

INDEPENDENT AFX EXPEDITION STANDARD SUPPLY

Premium JERSEY YOUTH

INDEPENDENT



IND5000P Men's Premium Heavyweight Hooded Pullover 13 Colors / Pg. 9
IND5000C Men's Premium Heavyweight Crew 13 Colors / Pg. 11
IND4000 Men's Heavyweight Hooded Pullover 43 Colors / Pg. 13
IND4000Z Men's Heavyweight Zip Hood 12 Colors / Pg. 15
IND20PNT Men's Midweight Fleece Pant 14 Colors / Pg. 17

AFX



IND20SRT Men's Midweight Fleece Short 14 Colors / Pg. 18
IND40RP Men's Lightweight Raglan Hooded Pullover 8 Colors / Pg. 19
IND45UVZ Unisex Heavyweight Varsity Zip Hood 5 Colors / Pg. 20
INDDUFBAG Day Tripper 29L Duffel Bag 10 Colors / Pg. 21
AFX90UN Unisex Lightweight Fitted Hooded Pullover 14 Colors / Pg. 25
AFX90UNZ Unisex Lightweight Fitted Zip Hood 16 Colors / Pg. 27
AFX64CRP Women's Lightweight Crop Hooded Pullover 8 Colors / Pg. 29
AFX24CRPC Women's Lightweight Crop Crew 8 Colors / Pg. 31
AFX4000 Men's Lightweight Fitted Hooded Pullover 7 Colors / Pg. 33

EXPEDITION



AFX4000Z Men's Lightweight Fitted Zip Hood 4 Colors / Pg. 34
EXP54LWP Men's Lightweight Windbreaker Anorak Jacket 8 Colors / Pg. 37
EXP54LWZ Men's Lightweight Windbreaker Jacket 19 Colors / Pg. 39
EXP64CRP Women's Lightweight Pullover Crop Windbreaker 4 Colors / Pg. 41
EXP52BMR Men's Premium Bomber Jacket 3 Colors / Pg. 43
EXP50F Men's Flannel Shirt 4 Colors / Pg. 45
EXP550Z Men's Canvas Workwear Jacket 2 Colors / Pg. 47
EXP560V Men's Canvas Workwear Vest 2 Colors / Pg. 48
EXP100PFZ Men's Hyper-Loft Puffy Jacket 1 Color / Pg. 49



EXP120PFV Men's Hyper-Loft Puffy Vest 1 Color / Pg. 49
EXP200PFZ Women's Hyper-Loft Puffy Jacket 1 Color / Pg. 50
EXP220PFV Women's Hyper-Loft Puffy Vest 1 Color / Pg. 50
EXP95NB Men's Heavyweight Windbreaker Jacket 5 Colors / Pg. 51
EXP99CNB Men's Heavyweight Windbreaker Coaches Jacket 5 Colors / Pg. 52
EXP94NAW Men's Water Resistant Windbreaker Anorak Jacket 5 Colors / Pg. 53
EXP35SSZ Men's Poly-Tech Soft Shell Jacket 3 Colors / Pg. 55
EXP80PTZ Men's Heavyweight Poly-Tech Zip Hood 1 Color / Pg. 56
EXP70PTZ Unisex Lightweight Poly-Tech Zip Track Jacket 5 Colors / Pg. 57

STANDARD SUPPLY



EXP60PAZ Women's Lightweight Poly-Tech Zip 6 Colors / Pg. 58
EXP90SHZ Unisex Heavyweight Sherpa Lined Heathered Zip Hood 5 Colors / Pg. 59
EXP40SHZ Men's Heavyweight Sherpa Lined Zip Hood 1 Color / Pg. 60
SS4500 Men's Midweight Hooded Pullover 37 Colors / Pg. 63
SS4500Z Men's Midweight Zip Hood 16 Colors / Pg. 65
SS3000 Men's Midweight Crew Neck 21 Colors / Pg. 67
SS1000 Unisex Lightweight Hoodback Terry Hooded Pullover 9 Colors / Pg. 69
SS1000Z Unisex Lightweight Hoodback Terry Zip Hood 12 Colors / Pg. 71
SS1000C Unisex Lightweight Hoodback Terry Crew 12 Colors / Pg. 73

PREMIUM



SS008 Women's Midweight Hooded Pullover 4 Colors / Pg. 75
SS650 Women's Lightweight Hooded Pullover 7 Colors / Pg. 77
SS650Z Women's Lightweight Zip Hood 7 Colors / Pg. 79
SS240 Women's Lightweight Crew 6 Colors / Pg. 81
PRM4500 Unisex Heavyweight Pigment Dyed Hooded Pullover 17 Colors / Pg. 85
PRM3500 Unisex Midweight Pigment Dyed Crew Neck 17 Colors / Pg. 87
PRM50PTPD Men's Pigment Dyed Fleece Pant 10 Colors / Pg. 89
PRM50STPD Men's Pigment Dyed Fleece Short 10 Colors / Pg. 90
PRM2500 Women's California Wave Wash Hooded Pullover 9 Colors / Pg. 91



PRM2500Z Women's California Wave Wash Zip Hood 7 Colors / Pg. 93
PRM2000 Women's California Wave Wash Crew 7 Colors / Pg. 94
PRM20PNT Women's California Wave Wash Fleece Pant 9 Colors / Pg. 95
PRM20SRT Women's California Wave Wash Fleece Short 9 Colors / Pg. 97
PRM4500TD Unisex Midweight Tie Dye Hooded Pullover 8 Colors / Pg. 99
PRM3500TD Unisex Midweight Tie Dye Crew Neck 8 Colors / Pg. 100
PRM50PTD Men's Tie Dye Fleece Pant 6 Colors / Pg. 101
PRM50STD Men's Tie Dye Fleece Short 2 Colors / Pg. 102
PRM4500MW Unisex Midweight Mineral Wash Hooded Pullover 1 Color / Pg. 103



PRM50PTMW Men's Mineral Wash Fleece Pant 1 Color / Pg. 104
PRM50STMW Men's Mineral Wash Fleece Short 1 Color / Pg. 104
PRM90HT Unisex Midweight French Terry Hood 10 Colors / Pg. 105
PRM90HTZ Unisex Midweight French Terry Zip Hood 11 Colors / Pg. 106
PRM33SBP Unisex Midweight Special Blend Raglan Hooded Pullover 15 Colors / Pg. 107
PRM33SBZ Unisex Midweight Special Blend Raglan Zip Hood 14 Colors / Pg. 109
PRM30SBC Unisex Midweight Special Blend Raglan Crew 14 Colors / Pg. 110
PRM65DRS Women's Midweight Special Blend Hooded Pullover Dress 4 Colors / Pg. 111
INDBKTSB Midweight Special Blend Blanket 9 Colors / Pg. 112

JERSEY YOUTH



SS150J Men's Lightweight Jersey Hooded Pullover 5 Colors / Pg. 115
SS150JZ Men's Lightweight Jersey Zip Hood 5 Colors / Pg. 116
PRM1500Y Youth Midweight Pigment Dyed Hooded Pullover 9 Colors / Pg. 119
PRM1500TD Youth Midweight Tie Dye Hooded Pullover 6 Colors / Pg. 120
SS4001Y Youth Midweight Hooded Pullover 13 Colors / Pg. 121
SS4001YZ Youth Midweight Zip Hood 10 Colors / Pg. 121
EXP24YWZ Youth Lightweight Windbreaker Jacket 4 Colors / Pg. 122
PRM15YSB Youth Lightweight Special Blend Raglan Hooded Pullover 10 Colors / Pg. 123
PRM15YSBZ Youth Lightweight Special Blend Raglan Zip Hood 7 Colors / Pg. 124



PRM10TSB Toddler Lightweight Special Blend Raglan Hooded Pullover 10 Colors / Pg. 125
PRM10TSBZ Toddler Lightweight Special Blend Raglan Zip Hood 7 Colors / Pg. 126
PRM16PNT Youth Lightweight Special Blend Pant 3 Colors / Pg. 127
PRM11PNT Toddler Lightweight Special Blend Pant 3 Colors / Pg. 127
PRM16SRT Youth Lightweight Special Blend Short 3 Colors / Pg. 128
PRM11SRT Toddler Lightweight Special Blend Short 3 Colors / Pg. 128

COLOR SWATCH LIBRARY



BASIC FLEECE >



BLACK PMS BLACK C CHARCOAL HEATHER PMS 433 C SOLID CHARCOAL PMS 431 C GUNMETAL HEATHER PMS 424 C SALT-N-PEPPER COOL GREY 9 C GREY HEATHER PMS 429 C SMOKE PMS 2330 C WHITE



SLATE BLUE PMS 2965 C CLASSIC NAVY PMS 5395 C NAVY PMS 296 C NAVY HEATHER PMS 296 C CLASSIC NAVY HEATHER PMS 296 C STORM BLUE PMS 4138 C COBALT PMS 286 C ROYAL PMS 287 C



ROYAL HEATHER PMS 294 C TURQUOISE PMS 638 C SKY HEATHER PMS 659 C MISTY BLUE 17-4021 TCX BLUE AQUA PMS 2905 C LAVENDER PMS 2567 C PLUM PMS 7653 C PURPLE PMS 273 C



LT. BLACKBERRY PMS 262 C BURGUNDY HEATHER PMS 1817 C MAROON PMS 490 C CURRANT PMS 195 C CARDINAL PMS 209 C BRICK RED PMS 201 C RED PMS 200 C RED HEATHER PMS 1955 C



DUSTY ROSE 17-1520 TCX DUSTY PINK PMS 7605 C BLUSH 13-1408 TCX LIGHT PINK PMS 217 C BURNT ORANGE HEATHER PMS 1605 C ORANGE PMS 172 C RUST PMS 180 C PEACH PMS 148 C



GOLDEN WHEAT HEATHER PMS 465 C GOLD 15-1058 TCX LIGHT YELLOW PMS 461 C MINT PMS 318 C DUSTY SAGE PMS 4183 C KELLY GREEN PMS 348 C KELLY GREEN HEATHER PMS 3415 C DARK GREEN PMS 3435 C



FOREST GREEN PMS 560 C ALPINE GREEN PMS 567 C OLIVE PMS 4226 C OLIVE HEATHER PMS 4224 C ARMY PMS 4228 C ARMY HEATHER PMS 5747 C BROWN PMS 7596 C SADDLE PMS 2319 C



SANDSTONE PMS 7504 C CEMENT WARM GREY 5 C BONE 11-0604 TCX OATMEAL HEATHER PMS 7527 C OATMEAL HTHR / SALT & PEPPER PMS 7527 C & COOL GREY 9 C SAFETY YELLOW 13-0443 TCX SAFETY ORANGE 16-1364 TCX NEON PINK 17-2033 TCX

BASIC FLEECE (CONTINUED) >



NATURAL SHERPA PMS 468 C HOUNDSTOOTH FOREST CAMO BLACK CAMO ARMY CAMO SNOW CAMO TIGER CAMO

LOOPBACK TERRY >



BLACK PMS BLACK C CHARCOAL HEATHER PMS 433 C ATHLETIC HEATHER PMS 429 C WHITE INDIGO 19-4028 TCX PORT 18-1420 TCX OLIVE 17-0613 TCX HARVEST GOLD 14-1036 TCX



SAND 14-1106 TCX BONE 11-0107 TCX MISTY BLUE 17-4021 TCX ROSE 14-1506 TCX

CALIFORNIA WAVE WASH >



BLACK PMS BLACK C SHADOW 18-5204 TCX SAGE 16-5304 TCX MISTY BLUE 17-4021 TCX DUSTY ROSE 17-1520 TCX BLUSH 13-1408 TCX BONE 11-0105 TCX FOREST CAMO HEATHER



BLACK CAMO HEATHER

SPECIAL BLEND >



BLACK PMS BLACK C CARBON HEATHER PMS 433 C NICKEL HEATHER PMS 424 C MIDNIGHT HEATHER PMS 534 C CLASSIC NAVY PMS 5395 C MAROON PMS 490 C CRIMSON HEATHER PMS 209 C MOSS HEATHER PMS 3305 C



PACIFIC HEATHER PMS 278 C POMEGRANATE HTHR PMS 703 C SEA GREEN HTHR PMS 563 C STONE HEATHER 14-4002 TCX FOREST CAMO HEATHER RED BUFFALO PLAID

TIE DYE >



TIE DYE BLACK TIE DYE NAVY TIE DYE AQUA BLUE TIE DYE PINK TIE DYE DUSTY PINK TIE DYE OLIVE TIE DYE COTTON CANDY TIE DYE SUNSET SWIRL



PIGMENT DYE >



PIGMENT BLACK PMS BLACK 7 C PIGMENT MAROON PMS 4985 C PIGMENT SLATE BLUE PMS 647 C PIGMENT ALPINE GREEN PMS 5545 C PIGMENT SANDSTONE PMS 7503 C PIGMENT LIGHT BLUE PMS 7453 C PIGMENT MINT PMS 563 C PIGMENT PINK PMS 190 C



PIGMENT YELLOW PMS 1205 C PIGMENT AMBER PMS 1675 C PIGMENT PLUM PMS 4284 C PIGMENT CLAY PMS 2328 C PIGMENT CEMENT PMS 4270 C PIGMENT SAGE PMS 5517 C PIGMENT DUSTY PINK PMS 7605 C PIGMENT IVORY PMS 4240 C

MINERAL WASH >



MINERAL WASH BLACK

WATER RESISTANT SOFT SHELL >



BLACK PMS BLACK C GRAPHITE PMS 432 C CLASSIC NAVY PMS 5395 C

WATER RESISTANT POLY-TECH >



BLACK PMS BLACK C GUNMETAL HEATHER PMS 424 C WHITE CLASSIC NAVY PMS 5395 C BRICK RED PMS 201 C ASTER BLUE PMS 300 C LAPIS GREEN PMS 326 C CORAL PMS 191 C

LIGHTWEIGHT WINDBREAKER >



SMOKE COOL GREY 1 C GRAPHITE PMS 432 C BLACK PMS BLACK C CLASSIC NAVY PMS 5395 C ROYAL PMS 287 C MAROON PMS 490 C RED PMS 200 C ARMY PMS 5743 C



SADDLE PMS 2319 C CLASSIC KHAKI 13-0607 TPX AQUA PMS 550 C BLUSH PMS 196 C SAFETY YELLOW 13-0443 TCX SAFETY ORANGE 16-1364 TCX FOREST CAMO BLACK CAMO



WHITE CAMO

WATER RESISTANT NYLON >



BLACK PMS BLACK C GRAPHITE PMS 432 C CLASSIC NAVY PMS 5395 C CLASSIC KHAKI 13-0607 TPX FOREST CAMO BLACK CAMO

WATERPROOF POLYESTER >



BLACK PMS BLACK C BLACK / CHECKER STRAP POLKA DOT CHEETAH BLACK CHEETAH SOUTHWEST TIGER CAMO FOREST CAMO



BLACK CAMO WHITE CAMO

FLANNEL >



CHAR. HTHR / BLACK PMS 433 C GREY HTHR / BLACK PMS 433 C OLIVE / BLACK PMS 4218 C RED / BLACK PMS 207 C

CANVAS WORKWEAR >



BLACK PMS BLACK C SADDLE PMS 2319 C



HEADQUARTERS

1 1341 Calle Avanzado
San Clemente, CA 92673

toll free: 877.366.9911
phone: 949.366.9911
fax: 949.366.5488
info@independenttradingco.com

SOCIAL MEDIA

- @independenttradingcompany
- /IndependentTradingCompany
- @indytradingco
- Independent Trading Company

DISTRIBUTION CENTERS

WEST COAST 2 4150 North Palm St.
Fullerton, CA 92835

EAST COAST 3 1511 N. Park Drive
Hazle Township, PA 18202



U.S. DISTRIBUTORS

S&S ACTIVEWEAR



Nevada, Florida, Georgia, Illinois,
Kansas, Ohio, New Jersey, Texas
toll free: 800.523.2155
phone: 630.679.9940
fax: 630.679.9941
ssactivewear.com

MISSION IMPRINTABLES



California
San Diego, Ca.
phone: 800.480.0800
missionimprintables.com

SUN APPAREL



California, Hawaii, Kentucky,
Nevada
phone: 877.478.6364
www.sun-apparel.com

SLC ACTIVEWEAR



Utah
phone: 888.557.0799
www.slicactivewear.com

INTERNATIONAL DISTRIBUTORS

AUSTRALIA



CHAPTER 2
DISTRIBUTION
phone: (07) 3890 7430
www.chapter2dist.com

BRAZIL



BLANKS CO.
cep: 04552-100
55 001 2679 8090
Contato@Blankco.com.br
www.blankco.com.br

CANADA



PRIVATE AGENT DND
phone: 450.356.3440
info@privateagentdnd.com
www.privateagentdnd.com

CANADA



S&S CANADA
phone: (800) 711-1600
en-ca.ssactivewear.com

EUROPE



L-SHOP-TEAM GmbH
info@l-shop-team.de
www.l-shop-team.eu

JAPAN



VIA TRANSPORTS
phone: 03 3792 4116
sales@anytees.com
www.1.anytees.com

MEXICO



DIMEO CLOTHING
COMPANY
phone: 01(800) 822-2285 01
(33) 3628 8825 /
3628 8866 / 3634 8035 /
3634 9646
direccion@dimeo.mx
www.dimeo.mx

UNITED KINGDOM



BUFFALO TRADING
phone: 020-8998-5978
contact@buffalotrading.co.uk
www.buffalotrading.co.uk





INDEPENDENT TRADING COMPANY
Quality Sweatshirts.
2023